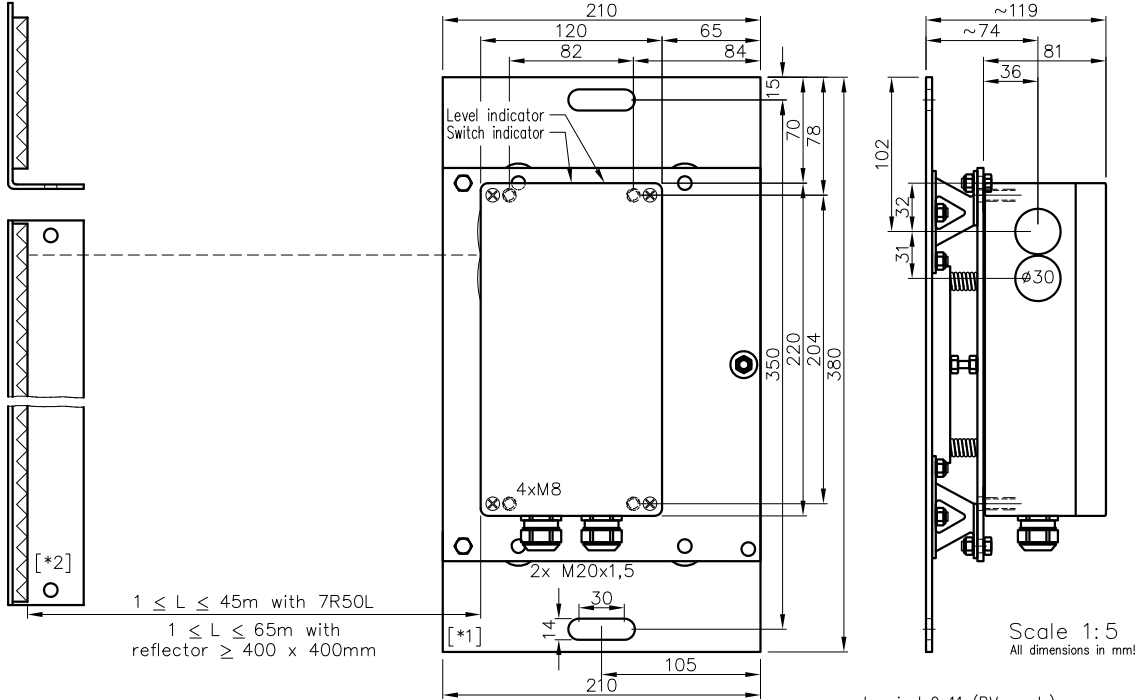



Anti-Collision Device for Cranes Type PP1047/2 & PV1047/2

self-checking





1...45m

Anti-Collision Device
for Cranes
self-checking

PP1047/2
PV1047/2

Order no.:

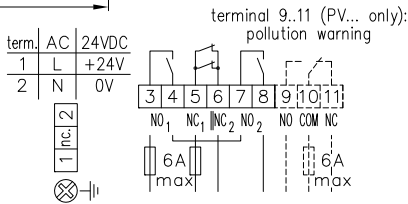
5727
5728

Hint:

Please refer to the manual for assembly and adjustment instructions of the light barrier and the corresponding accessories.

Technical Characteristics:

Housing	Al-Cast
Weight	approx. 2500g without adjustment flange
Protection mode	IP65
Connection	terminal strip
Supply	230VAC/10VA
Output main contact	2x Relay 250VAC/110VDC, 6A, 1500VA/150W, 2xNO, 1xNC supervised & forceguided
Output pollution warning	1x Relay 250VAC/10A, 2500VA, 1xCh (only PV...)
Signal mode	bright switching
Operation mode	Alternating light, dynamic, continually self-testing
Transmitter light	GaAs 880nm, invisible
Access time	approx. 80ms
Switching rate	Relay: 3/s
Switch indicator	2x LED green
Steady Light Resist.	>80kLx
Operating Temperature	-25...+60°C



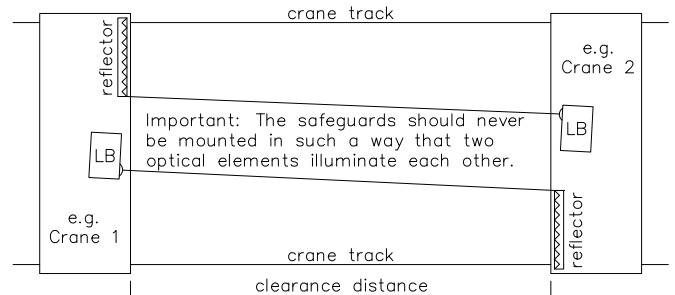
The relay contacts used must be fused externally with a maximum 6A. The closing contacts NO1 & NO2 have to be connected in series!

Options:

Housing	Polyester, K
Connection	Plug
Supply	115VAC, 42..48VAC, 24VAC, 24VDC/~350mA
Level indicator	DIANA, i (standard in PV...)
If using cooling water flange, then milled wall, y	
PV1047/2	with pollution warning (#5728)

Mounting example:

The mounting has to consider that the light barrier make out the reflector on the one hand (greatest possible distance of the crane is 45 m with reflector type 7R50L) and on the other hand the light barrier does not recognise the reflector by reaching the border line (see operating instructions).



Accessories:

- Reflector 7R50BL [*2] (#6680)
- Reflectors 4R100BL [*2] (#6801), 18R100BL (#6802)
- Reflectors anti-fogging version 4R100BLAF (#6801A01), 18R100BLAF (#6802A01)
- Heatable reflector 8R100BLH (#6803)
- Adjustment flange JF57S [*1] (#8655)
- Cooling water flange KW152 (#8881)