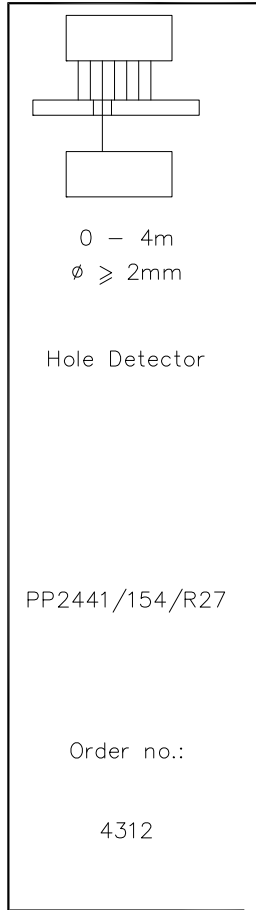
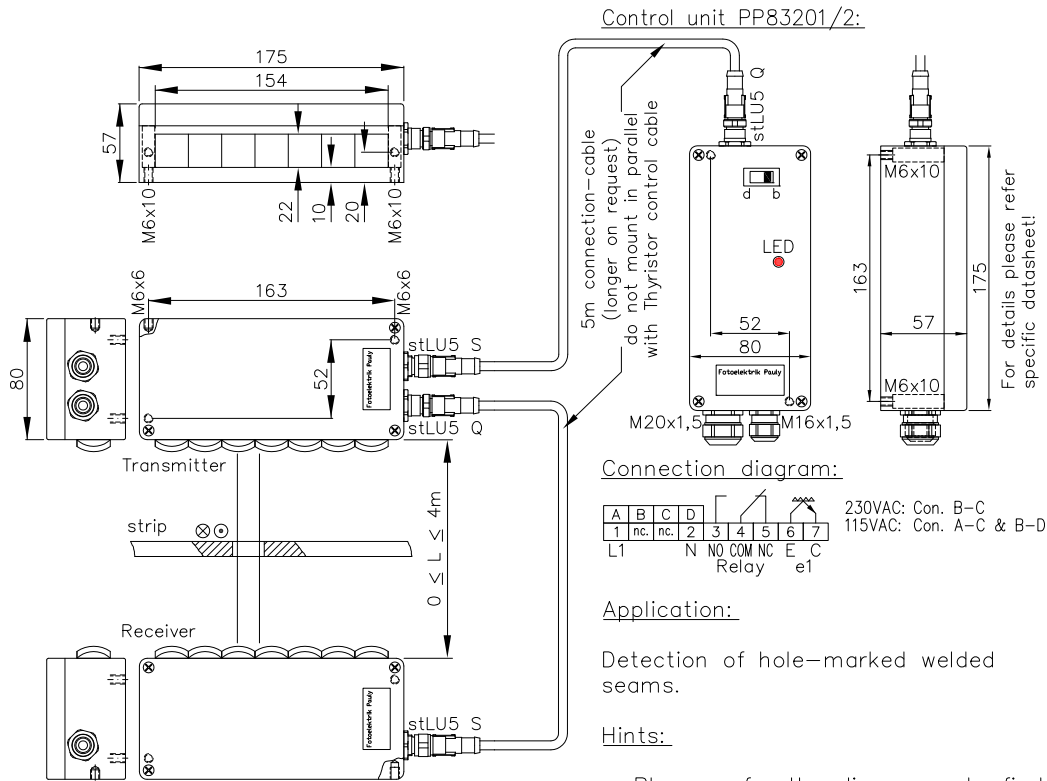


## Hole Detector Type PP2441/154/R27 for Detection of Welded Seams



### Technical Characteristics:

Housing: Al-Cast  
 Weight: approx. 2200g  
 Protection Mode: IP65  
 Connection\*: Terminal block  
 Supply\*: 230/115VAC/10VA ±10%  
 Output\*: Relay 250VAC/8A, 150W/1500VA, 1xCh, R  
 Optocoupler 60V/50mA, e1  
 Switching Mode\*: bright-/darkswitching, selectable  
 Transmitter Light: 850 ... 880nm, invisible  
 Steady Light Resistance: >80kLx  
 Interference Suppressor: forced synchronisation  
 Access Time: Standard: ≥ 12ms/switch Transition  
 Switching Frequency: ~40/s  
 Switch Indicator\*: LED red  
 Switch pulse prolongation\*: 0...3s switch-on-off-delay, z3  
 Ambient Temperature: -25...+60°C  
 \*: control unit PP83201/2

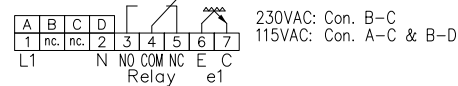
### Special Design:

Access Time: q: ≥ 1,5ms/switch Transition  
 qq: ≥ 0,5ms/switch Transition  
 Supply Voltage\*: 24VDC, 42...48VAC  
 Output\*: pnp, e2; npn, e3; short-circuit proof  
 Heat-protected optical system, pl

### Accessories:

Control Unit PP83201/2  
 Cooling Water Flange 2xKW27 (then milled wall, y)

### Connection diagram:



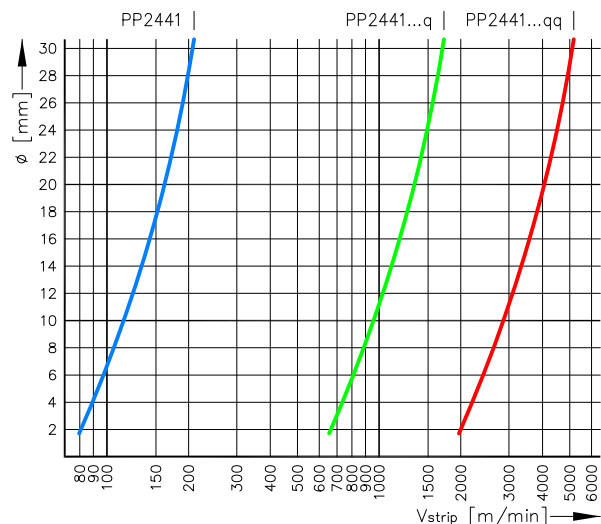
### Application:

Detection of hole-marked welded seams.

### Hints:

- Please refer the diagram to find the required device. In case of faster strip speeds please contact us.
- The non-transparent strip must cover the device completely. In case of smaller strips the optical side areas of the device should be masked by non-transparent masks or devices with a smaller detection range should be used.

### Diagram: Hole-size versus strip speed:



4312 DE (21.06.02 tb) (17.12.13 tb)  
 E\_4312 1 (02.08.02 tb) 24.11.17 tb  
 (18.12.89 kg) (18.11.04 mj)  
 (09.06.97 tb) (30.03.07 tb)