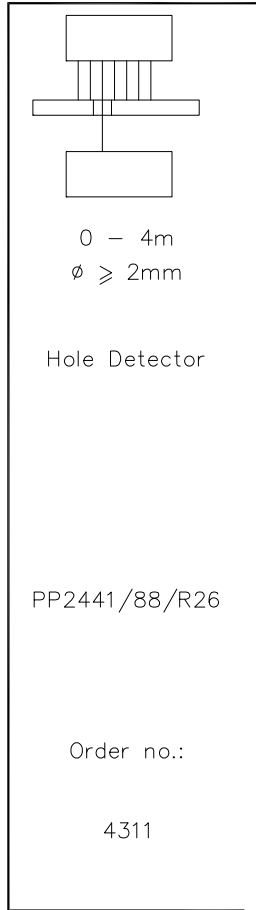
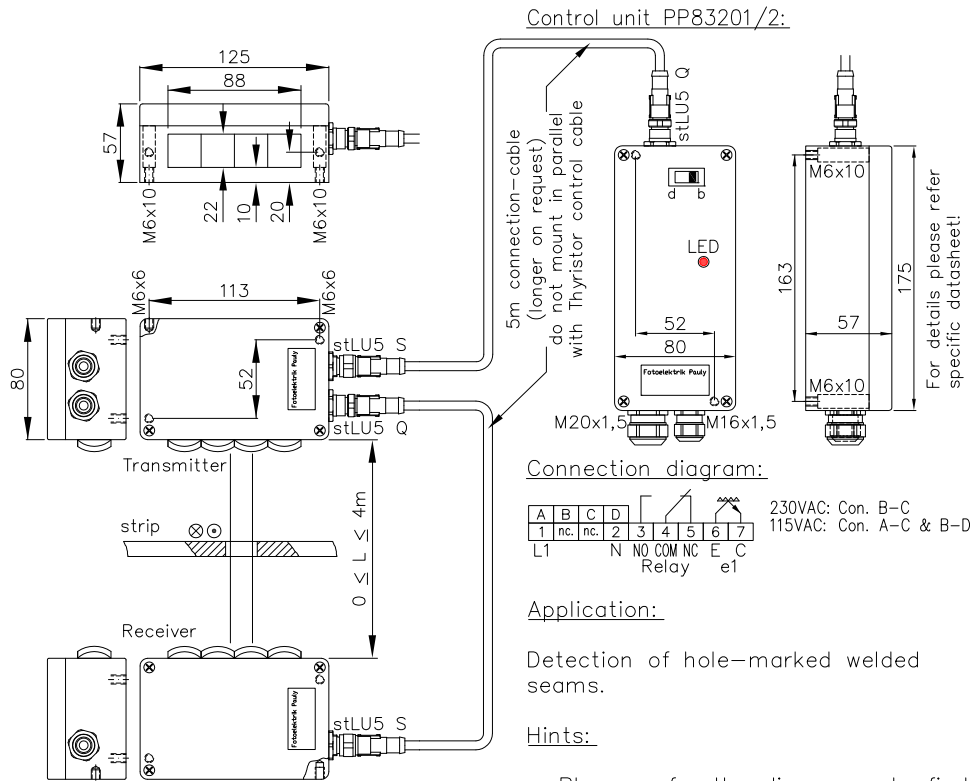


Hole Detector Type PP2441/88/R26 for Detection of Welded Seams



Technical Characteristics:

Housing: Al-Cast
Weight: approx. 2000g
Protection Mode: IP65
Connection*: Terminal block
Supply*: 230/115VAC/10VA ±10%
Output*: Relay 250VAC/8A, 150W/1500VA, 1xCh, R
Optocoupler 60V/50mA, e1

Switching Mode*: bright-/darkswitching, selectable
Transmitter Light: 850 ... 880nm, invisible
Steady Light Resistance: >80kLx
Interference Suppressor: forced synchronisation
Access Time Standard: ≥ 12ms/switch Transition
Switching Frequency: ~40/s
Switch Indicator*: LED red
Switch pulse prolongation*: 0...3s switch-on-off-delay, z3
Ambient Temperature: -25...+60°C
*: control unit PP83201/2

Special Design:

Access Time: q: ≥ 1,5ms/switch Transition
q: ≥ 0,5ms/switch Transition
Supply Voltage*: 24VDC, 42...48VAC
Output*: pnp, e2; npn, e3; short-circuit proof
Heat-protected optical system, pl

Accessories:

Control Unit PP83201/2
Cooling Water Flange 2xM26 (then milled wall, y)

The design and make of the devices and their electronics are intellectual property of the company "Fotoelektrik Pauly GmbH". Internal circuit diagrams can, for copyright reasons, not be given therefore. Subject to technical alterations. Errors excepted. The reprinting of this data sheet or the copying of extracts from it are allowed only with the approval of the "Fotoelektrik Pauly GmbH" and with an indication of the sources used. Infringements are punishable by law.

4311 DE (21.06.02 tb) (17.12.13 tb)
E_4311 1 (02.08.02 tb) 24.11.17 tb
(18.12.89 kg) (18.11.04 mj)
(09.06.97 tb) (30.03.07 tb)

