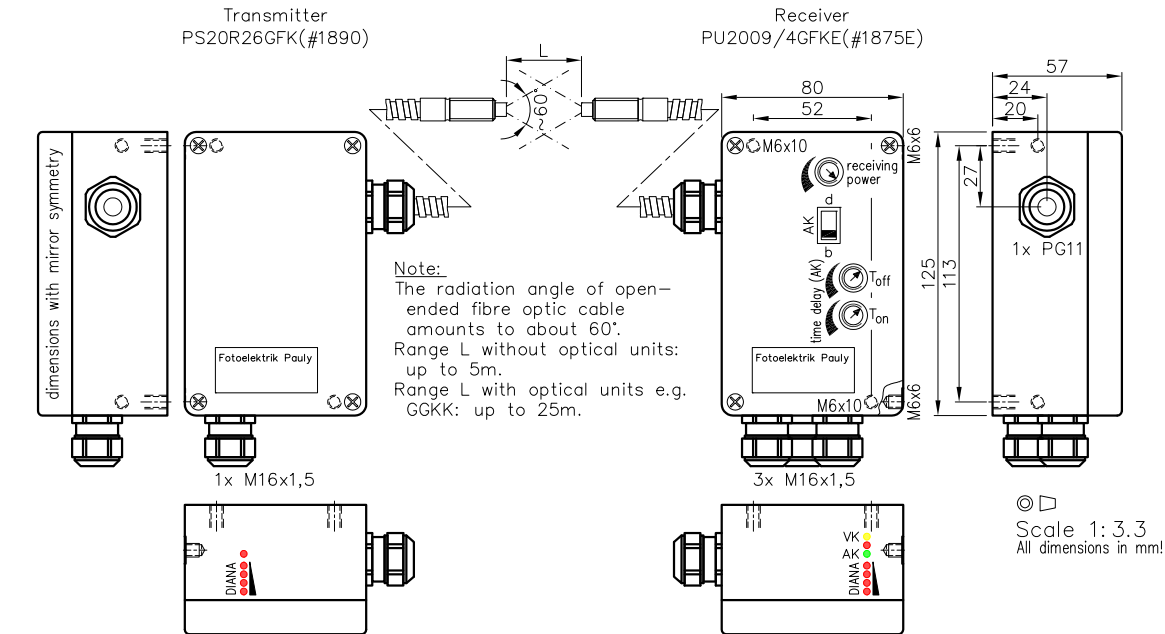
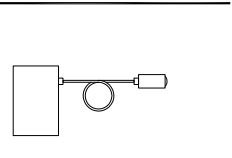


## Transmitter-Receiver Light Barrier Type PU2009/4GFK for Glass Fibre Optic Cable Connection with 'intelligent' Pollution Warning Output

0-5(25)m

Transmitter-Receiver  
Light Barrier for  
glass fibre optic  
cable connection  
with 'intelligent'  
Pollution Warning  
Output

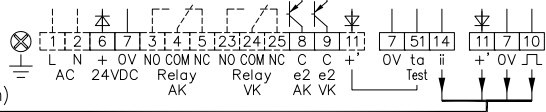
PU2009/4GFK

Order no.:  
1875

Connection diagramm transmitter:



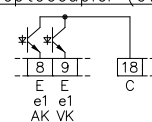
Connection diagramm receiver:



Technical characteristics:

Housing	Al-Cast
Weight	Receiver: approx. 700g Transmitter: approx. 500g
Protection mode	IP65
Connection	Terminal block
Supply	24VDC/90mA without load
Output	2x pnp 60mA s.-c.-prot., e2
Signal mode	bright-/darkswitching, selectable (only AK)
Transmitter light	LED 850...880nm, invisible
Steady light resistance	>80kLx
Interference suppressor	Force synchronization
Access time	<12ms/switch transition
Switching rate	electron.: 40/s; Relay: 10/s
Switch indicator (receiver)	LED's green, red & yellow
Working indicator (transm.)	LED red
Level indicator (t & r)	4x LED red
Ambient temperature	-25...+60°C
Testing by transmitter blanking, ta	

Connection diagramm optocoupler (e1, optional):



Features:

Connection	Plug, no.-cable
Supply	230VAC, 115VAC, 42...48VAC
Output	2x Optocoupler 60V/50mA, e1 2x Relay 250VAC/10A, 2500VA, 1xCh, R
Access time	"q": <2ms/switch transition
Switching rate	"q": 300/s, Relay: 10/s
Time delay	Switching-on-off-delay, separately adjustable (only AK), z...

If using cooling water flange, then milled wall, y

Notes:

Outputs: The switching equipment for the Pollution Warning Output (VK, yellow LED) is switched if, subsequent to an interruption in light beam (red LED on) and the light path being free again (AK, green LED on), dirt or clogging causes the signal level to be under five times the minimum level (red and green LED on) and the light beam is then interrupted again. At this point in time, the light barrier is still fully functional. As soon as dirt has been removed (green LED on, red LED off), the dirt indicator (yellow LED) switches off.

Terminal blocks: Cage clamp; Stripped conductor length 8...9mm; Conductor cross section 0,25...2,5mm<sup>2</sup> (with insulated ferrule up to 1,5mm<sup>2</sup> only); actuated by screwdriver 2,5x0,4mm.

Testing function ("ta", terminal 51): Transmitter activated by +24V; Transmitter deactivated by 0V or nc. To use this function remove wire bridge between terminal 11 & 51.

Accessories:

- Fibre optic cable GFK...
- Optical units e.g. A-GFK, At-GFK or GGFK
- Cooling water flange KW26

Optic unit accessories:

- Diaphragms
- Optical filters
- Adjustment flange
- Cooling water flange
- Anti dust tube

The design and make of the devices and their electronics are intellectual property of the company "Fotoelektrik Pauly GmbH". Internal circuit diagrams can, for copyright reasons, not be given therefore. Subject to technical alterations. Errors excepted. The reprinting of this data sheet or the copying of extracts from it are allowed only with the approval of the "Fotoelektrik Pauly GmbH" and with an indication of the sources used. Infringements are punishable by law.

1875 DE (25.05.05 tb)  
E\_1875\_1 (05.11.14 tb)  
(27.11.03 gs) 07.11.17 tb  
(21.02.05 ml)