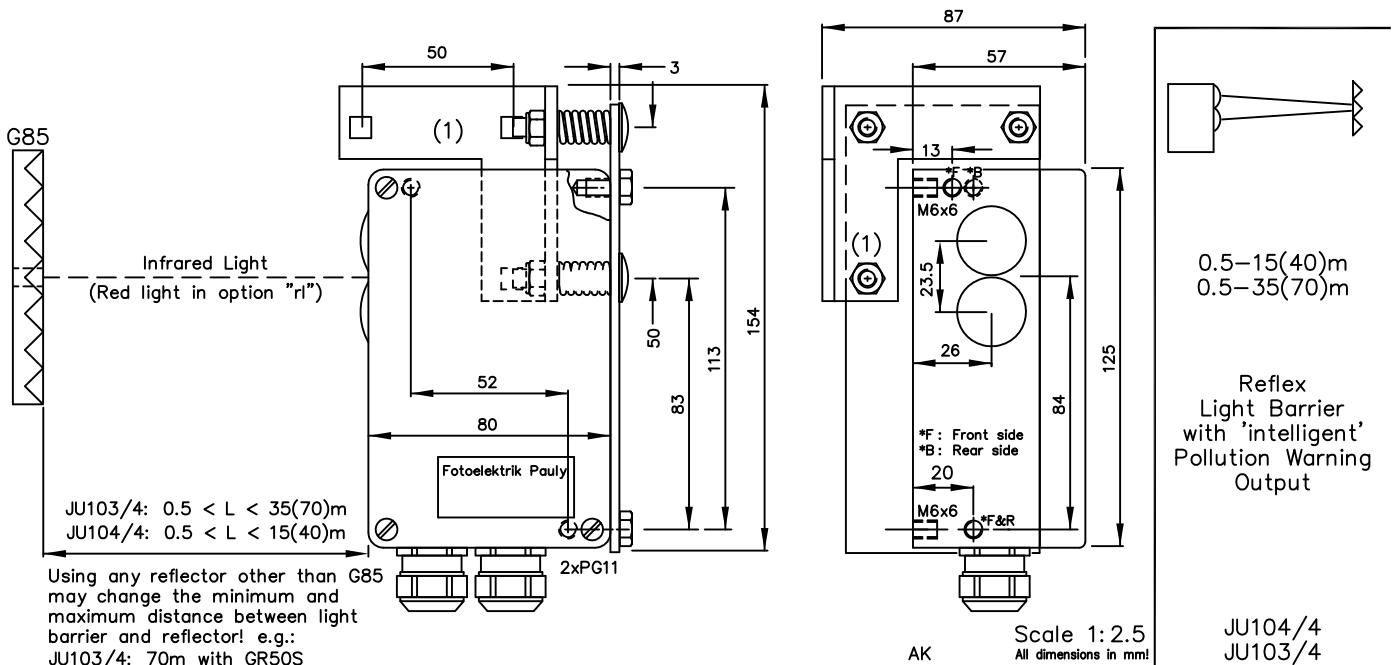
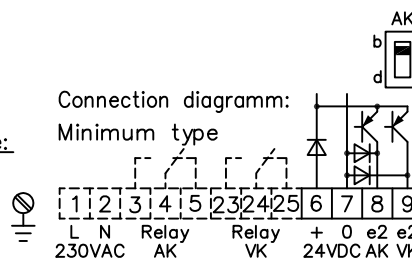


(Infra-)Red-Light Reflex Light Barrier Types JU104/4 & JU103/4 with 'intelligent' Pollution Warning Output



Technical characteristics of minimum type:

Housing	Al-Cast
Weight	approx. 700g
Protection mode	IP65
Connection	Terminal strip
Supply	24VDC/~80mA without load
Output	pnp 60mA s.c.-prot., e2
Signal mode	bright-/darkswitching selectable (only AK)
Transmitter light	GaAs 880nm, invisible
Steady light resistance	JU103/4:>80kLx JU104/4:>100kLx
Interference suppression	Force synchronization
Light beam diameter	approx. 130mm/10m
Access time	<12ms/Switch transition
Switching rate	Relay: 10/s; electron.: 40/s
Switch indicator	LED's green, red, yellow
Ambient temperatur	-25...+60°C



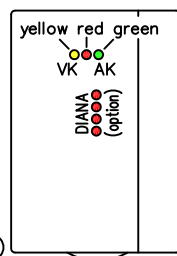
Features:

Connection	4 pin Plug stLU4 4+1 pin Plug stA5 6+1 pin Plug stBi7 6+1 pin Plug stH7 5+1 wire No.-Cable K6
Supply	230V, 110...120V, 42...48V, 24VAC or 230/115/45VAC with universal transformer
Output	2x Relay 250VAC/10A, 2500VA, 1xCh, R 2x npn 60mA s.c.-prot., e3 2x Optocoupler 60V/50mA, e1
Access time	"a": <2ms/Switch transition
Switching rate	"q": 300/s, Relay: 10/s
Level indicator	DIANA, i
Transmitter light	Red light 650nm, visible light spot, rl
Heat-protected transducer system, pl	If using cooling water flange, then milled wall, y

Hints: The switching equipment for the pollution warning (VK, yellow LED) is switched through when, subsequent to an interruption in light beam (red LED on) and the light path being free again (green LED on), dirt or clogging causes the signal level to be under five times the minimum level (red and green LEDs on) and the light beam is then interrupted again. At this point in time, the light barrier is still fully functional. As soon as the dirt has been removed (green LED on, red LED off), the dirt indicator (yellow LED) switches off.

Accessories:

- Reflectors
 - Diaphragms
 - Adjustment flange JF26H (1)
 - Heavy adjustment flange R26SH
 - Elbow tube adjustment AD26SS1 or AD26SS2
 - Cooling water flange KW26
 - Anti dust tube TUB75 with adapter plate
 - Integrated protection system KJT.. or KRT26*
- * Including: cooling by water, adjustment, anti dust tube (optional: diaphragms, optical filter)



1132 DE (18.02.05 mjl)
E_1132_1 (13.04.05 mjl)
(02.05.97 tb) 18.06.13 tb
(13.01.03 gs)