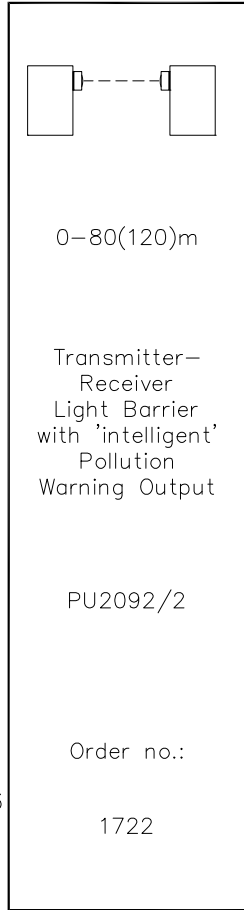
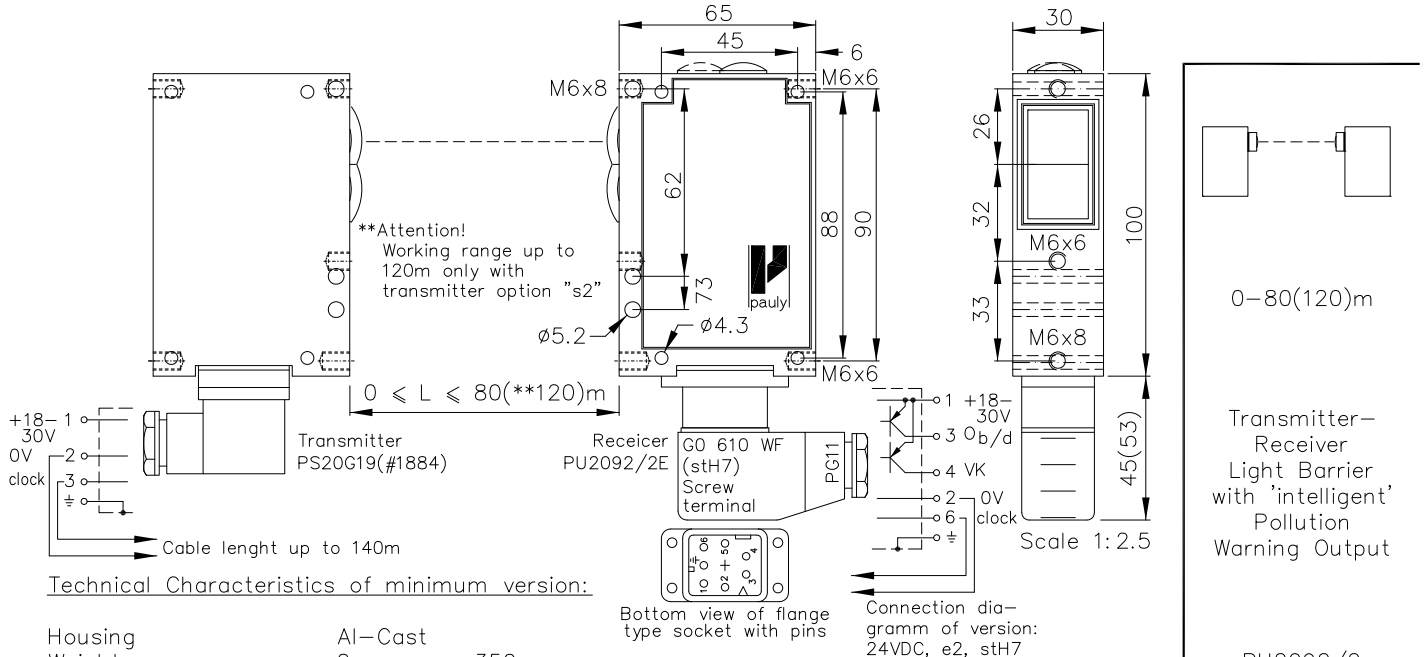


Transmitter-Receiver Light Barrier Type PU2092/2 with 'intelligent' Pollution Warning Output



Housing	Al-Cast
Weight	2x approx. 350g
Protection mode	IP65
Connection	Receiver: 6+1 pin plug stBi7 Transmitter: 3+1 pin plug stH4
Supply	Receiver: 24VDC/40mA without load Transmitter: 24VDC/50mA
Output	pnp 60mA s.-c.-prot., e2
Signal mode	bright/dark, selectable (only AK)
Transmitter light	LED 880nm, invisible
Steady light resistance	>80kLx
Interference suppression	Forced synchronisation
Light beam diameter	approx. 2500mm/20m
Access time	<12ms/switch transition
Switching rate	40/s
Switch indicator	LEDs, receiver
Working indicator	LED, transmitter
Ambient temperature	-30...+80°C (100°C*)

Features:

Connection	6+1 pin plug stBi7 6+1 pin plug stH7 5+1 wire no.-cable K6
Output	nnp 60mA s.-c.-prot., e3 Optocoupler 60V/50mA, e1 "a": <2ms/switch transition "q": 300/s
Access time	0-10s, switching-on-off-delay, separately adjustable (only AK), z10
Switching rate	DIANA, i
Time delay	Increased transmitting power for working range up to 120m, s2
Level indicator	Heat-protected transistor system, pl
	If using cooling water flange, then milled wall, y
	Testable by interrupting the transmitter, ta

Accessories: *Exceeding the temperature for a short time does not usually impair functioning

- Diaphragms
- Optical filters
- Adjustment flange JF19H(1)
- Elbow tube adjustment JR19(2&3)
- Cooling water flange KW19
- Anti heat shield & anti dust tube (K)JT19

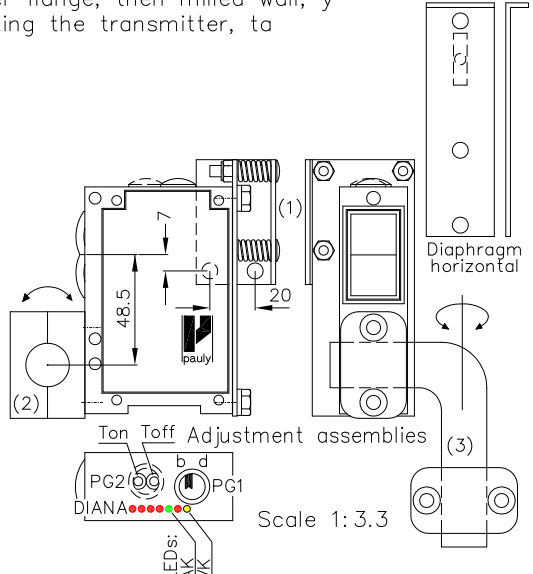
Hints: Selection of bright/dark switching mode is standard. The selection switch can be reached after removing the blanking screw designated 'PG1'. Bright switching means that the output of the main contact element is operated when the transmitter light is received by the receiver. The switch indicator (AK, green LED) lights when the light path is free.

The on- (Ton) and off- (Toff) delay are optional. Turning the controls behind 'PG2' clockwise increases delay times. The delay time range is between approx. 0 and 10 secs. Other delays are available on request.

The level indicator 'DIANA' (Digital ANALog indicator) is optional, too. DIANA shows the level approx. 20 to 25 times above the threshold signal. For proper operation of the light barrier it is not necessary to have all DIANA LEDs on!

Connecting the optional available test input to 24V will switch on, nc or 0V will interrupt the transmitter.

The switching equipment for the Pollution Warning (VK, yellow LED) is switched through when, subsequent to an interruption in light beam (red LED on) and the light path being free again (green LED on), dirt or clogging causes the signal level to be under five times the minimum level (red and green LED on) and the light beam is then interrupted again. At this point in time, the light barrier is still fully functional. As soon as dirt has been removed (green LED on, red LED off), the dirt indicator (yellow LED) switches off.



1722 DE (17.02.05 m.j)
E_1722_1 (24.06.96 tb)
(07.01.03 ds)