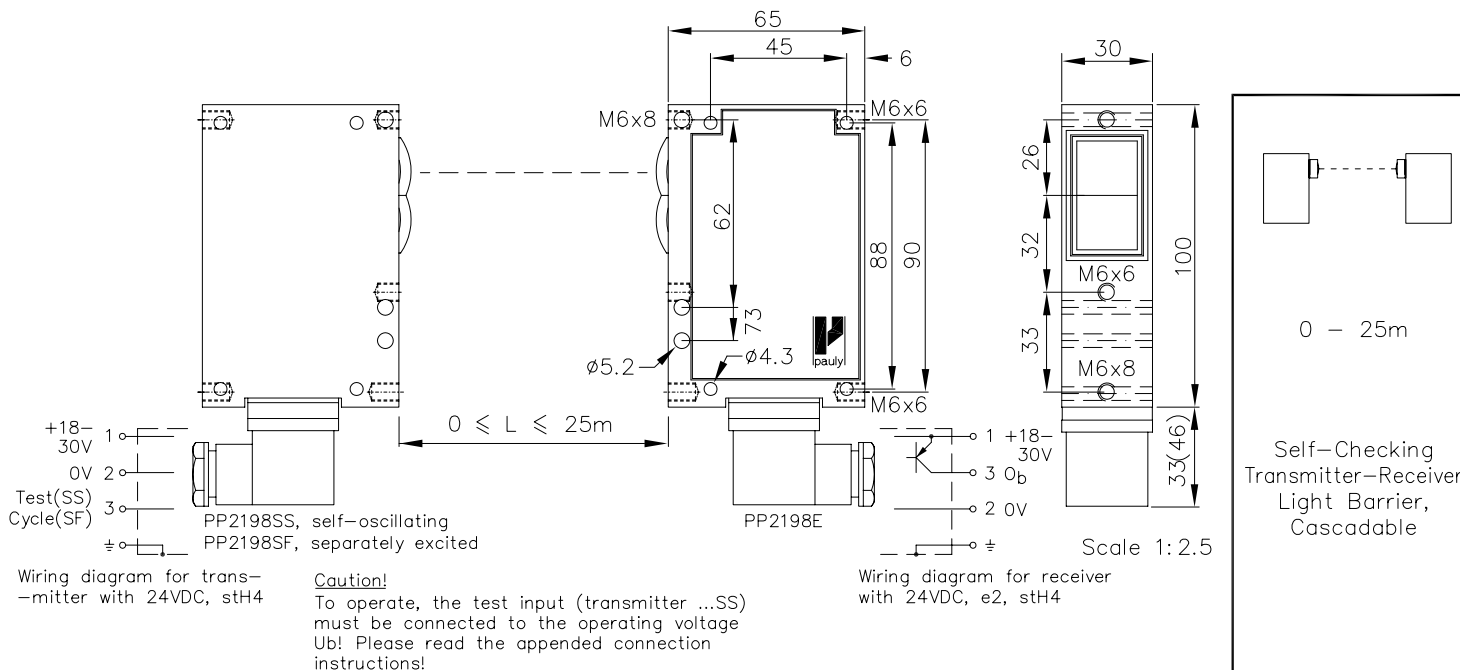


Self-Checking Transmitter-Receiver Light Barrier, Cascadable Type PP2198



Technical Characteristics:

Housing	cast aluminium
Weight	2x approx. 350g
Protection mode	IP65
Connection	2x 3+1-pin plug stH4
Supply	24VDC/50&20mA f. T&R
Output	pnp 60mA s.c.-prot. e2
Signal mode	square wave, ~ 6:6 ms
Transmitting light	LED 880nm, invisible
Steady light resistance	>80kLx
Light-beam dia.	Transmitter approx. 500 mm/25 m Receiver approx. 900 mm/25 m
Working indicator transmitter	LED red
Switch indicator receiver	LED green
Level indicator receiver	DIANA, i
Ambient temperature	-25...+60°C

Special versions:

Connection	4-pin plug stLU4 4+1-pin plug stA5 6+1-pin plug stA7 6+1-pin plug stH7 3+1 wire no. cable K4
Heat-protected optical system, pl	If using cooling water flange, then milled wall, y

Accessories:

Control unit with self-checking relay, type PP2128ST or PP2129ST
Optical diaphragms, special filters
Cooling water flange KW19
Anti heat shield & anti dust tube (K)JT19
Adjustment flange JF19H (1)
Elbow tube adjustment JR19(2&3)

Notes on use:

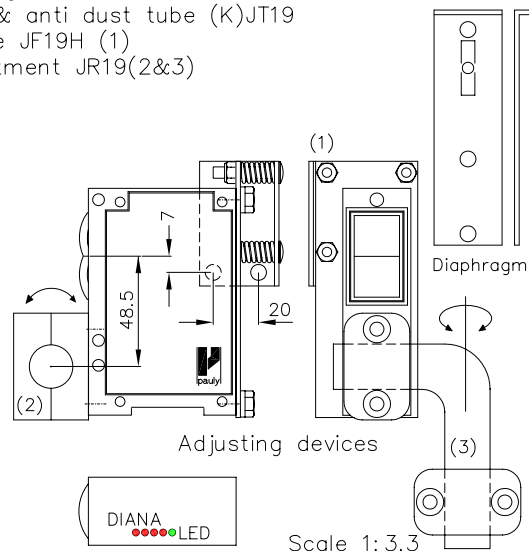
This light barrier is principally used as a safety light barrier. A control unit with self-checking relay, e.g. PP2128ST, is necessary for this.

The special feature here is that several light barriers can be connected together into one light grid. Transmitters and receivers are then mounted alternatively in one row, whereby the output signal of one receiver drives the clocked pulse at the input of the following transmitter. In each case, the first transmitter has the type designation PP2198SS and can be tested externally, while the following transmitters have the designation PP2198SF and cannot be tested. The last receiver's output signal is directed into the control unit.

The transmitter input "test" makes it possible at the first transmitter to test the entire system. Terminal test connected to 0V = transmitter turned off, terminal test to + operating voltage = transmitter is working.

In the arrangement as light grid it must be ensured in all cases that the distances between the light barriers above each other are large enough that a transmitter only lights the receiver above it because otherwise the safety function will be actuated. See also the special operating instructions.

The level indicator "DIANA" (Digital ANALog indicator) indicates approximately 20 to 25 times the levels above the response threshold. It is not necessary to have all DIANA LED's on for the light barrier to function perfectly. *E_ 1698 1.TXT*



1698, DE (14.04.05 m)
(14.06.05 tb)
27.06.05 tb
E_ 1698 1 (18.11.03 gs)
(18.02.05 m)