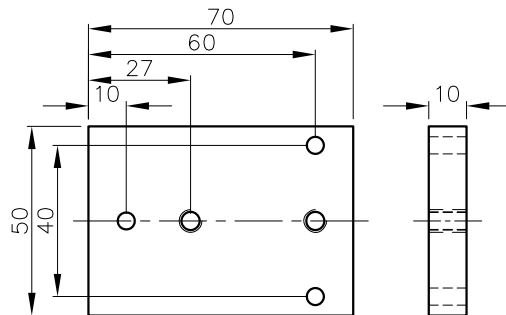


Rohrkrümmerjustage für PLDM1030 Typ ADPLDM1030SS1

Elbow Tube Adjustment for PLDM1030 Type ADPLDM1030SS1



Mat.: Al. eloxiert (RoHS), optional VA
Mat.: Al anodised (RoHS), optional stainless steel

M: 1:2
Scale 1:2
All dimensions in mm!

Z

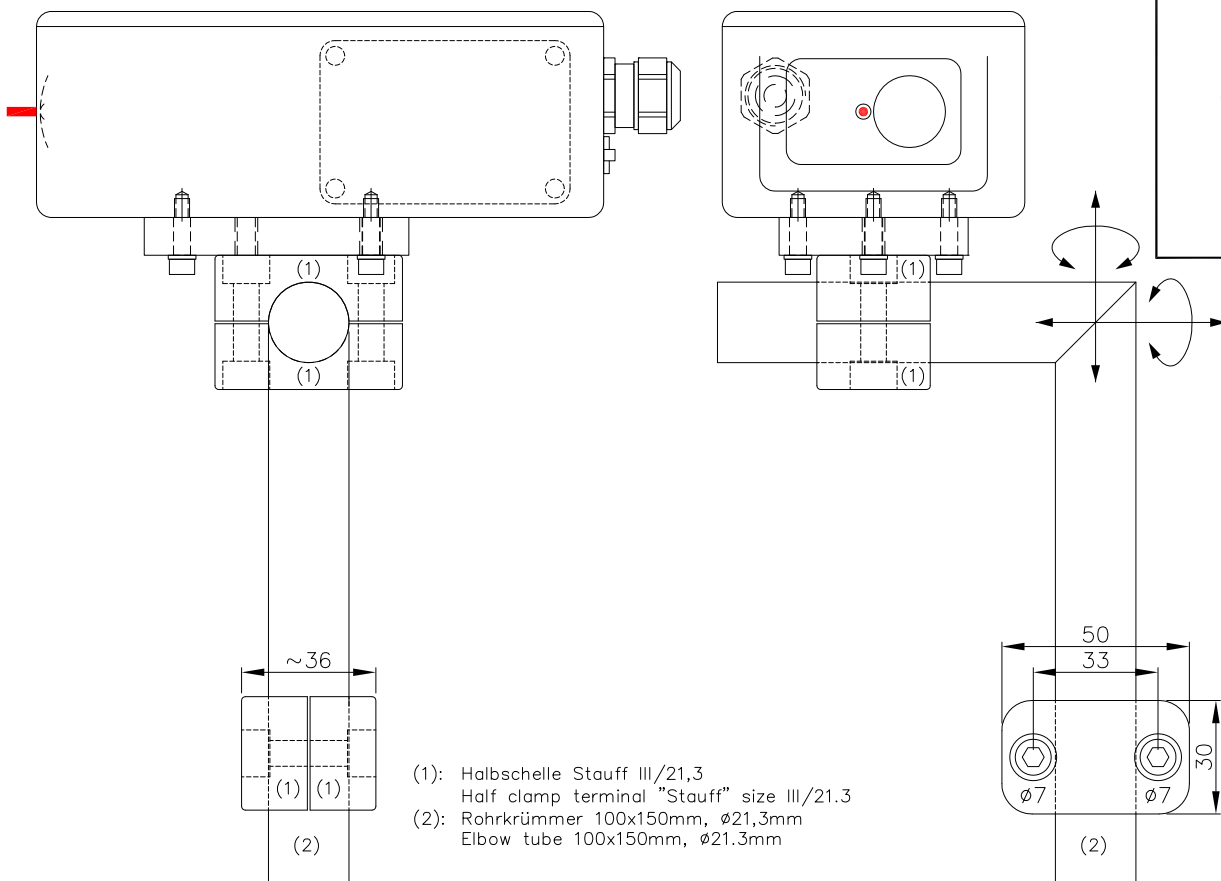
Rohrkrümmer-
justage

Elbow Tube
Adjustment

ADPLDM1030SS1
ADPLDM1030SS1VA

Best.-Nr.:
Order No.:

8667
8667VA



- (1): Halbschelle Stauff III/21,3
Half clamp terminal "Stauff" size III/21.3
(2): Rohrkrümmer 100x150mm, ø21,3mm
Elbow tube 100x150mm, ø21.3mm